

ENVIRONMENTAL IMPACT STATEMENT

Nautilus Minerals Niugini Limited

Solwara 1 Project

Volume A
Main Report

Figures and Plates

September 2008

CR 7008_9_v4

ENVIRONMENTAL IMPACT STATEMENT

Solwara 1 Project

VOLUME A: MAIN REPORT FIGURES AND PLATES

CR 7008_09_v4
September 2008



Project director	David Gwyther	
Project manager	Michael Wright	
Version:	Details:	Approved:
CR 7008_09_v1	Initial draft to client	July 2008
CR 7008_09_v2	Second draft to client	August 2008
CR 7008_09_v3	Third draft to client	September 2008
CR 7008_09_v4	Final for exhibition	September 2008

CONTENTS

Figures

- 1.1 Project location
- 1.2 Solwara 1 Project areas
- 1.3 Project area: Barge corridor, crew transfer route and Port of Rabaul

- 3.1 EIA process under PNG *Environment Act 2000*

- 4.1 Areas visited as part of the Project's stakeholder consultation program

- 5.1 Proposed Mining Lease Boundary
- 5.2 General arrangement of offshore Project activities
- 5.3 Port of Rabaul proposed Project infrastructure
- 5.4 Mineralised zone at Solwara 1
- 5.5 Solwara 1 proposed mining area
- 5.6 Seafloor Mining Tool with drum cutter
- 5.7 Seafloor Mining Tool cutting
- 5.8 Riser and Lift System
- 5.9 Mining Support Vessel
- 5.10 Proposed Solwara 1 mining area - pre and post mining
- 5.11 Unconsolidated sediment at Solwara 1
- 5.12 Schematic of the ore dewatering process Part A
- 5.13 Schematic of the ore dewatering process Part B

- 6.1 Solwara 1 development schedule

- 7.1 Simplified plate configuration of the Papua New Guinea region
- 7.2 Distribution of earthquake epicentres and active volcanoes (1900 - 2008)
- 7.3 Seismic hazard zones in PNG
- 7.4 Rabaul Caldera
- 7.5 Global hydrothermal vents
- 7.6 Back-arc basin formation
- 7.7 Formation of chimneys and seafloor massive sulphide mounds
- 7.8 Wind roses for the Bismarck Sea
- 7.9 Plume of ash and steam from Tavurvur Volcano, 29 May 2008
- 7.10 Regional currents
- 7.11 Oceanographic profiles of temperature and salinity from 83 casts within 65 km of Solwara 1 in the Bismarck Sea 1985 – 2005
- 7.12 Current meter and sediment trap deployment locations
- 7.13 Progressive vector diagram of net horizontal water movement over 12 months at Solwara 1
- 7.14 Naturally occurring particulate plumes in the vicinity of Solwara 1
- 7.15 Current roses for water 6 m above Solwara 1 mound

- 7.16 Regional setting and geology of the eastern Manus back-arc basin
 - 7.17 Solwara 1 proposed mining area, locations of sediment cores and profile lines, photographs and composition of sediment cores
 - 7.18 Images of faecal pellets in volcanoclastic sediments of Solwara 1
 - 7.19 Distribution of Cu in sediments of Solwara 1 in profiles I, II, III (A) and surface sediments (B)
 - 7.20 Depth zones
 - 7.21 Trophic webs and vertical migration of organisms in the water column
 - 7.22 Zones of mineralisation and locations of active vents observed in 2006, 2007 and 2008
 - 7.23 Solwara 1 dead snail patches
 - 7.24 Sediment sample sites on the abyssal plain west of Solwara 1
 - 7.25 Port of Rabaul water sampling locations
 - 7.26 Measurement of SO₂ concentrations using satellite spectrometers after an eruption of Tauruvur Volcano on 7 October 2006
-
- 8.1 Tuna fishing efforts within the PNG Exclusive Economic Zone
-
- 9.1 Popability of return water plume exceeding ANZECC/ARMCANZ (2000) suspended solids target at Solwara 1
 - 9.2 Dipositional footprint from unconsolidated sediment disposal and competent waste material side casting, post-mining at Solwara 1
 - 9.3 Sources of potential impact from offshore mining processes
-
- 13.1 Nautilus management structure

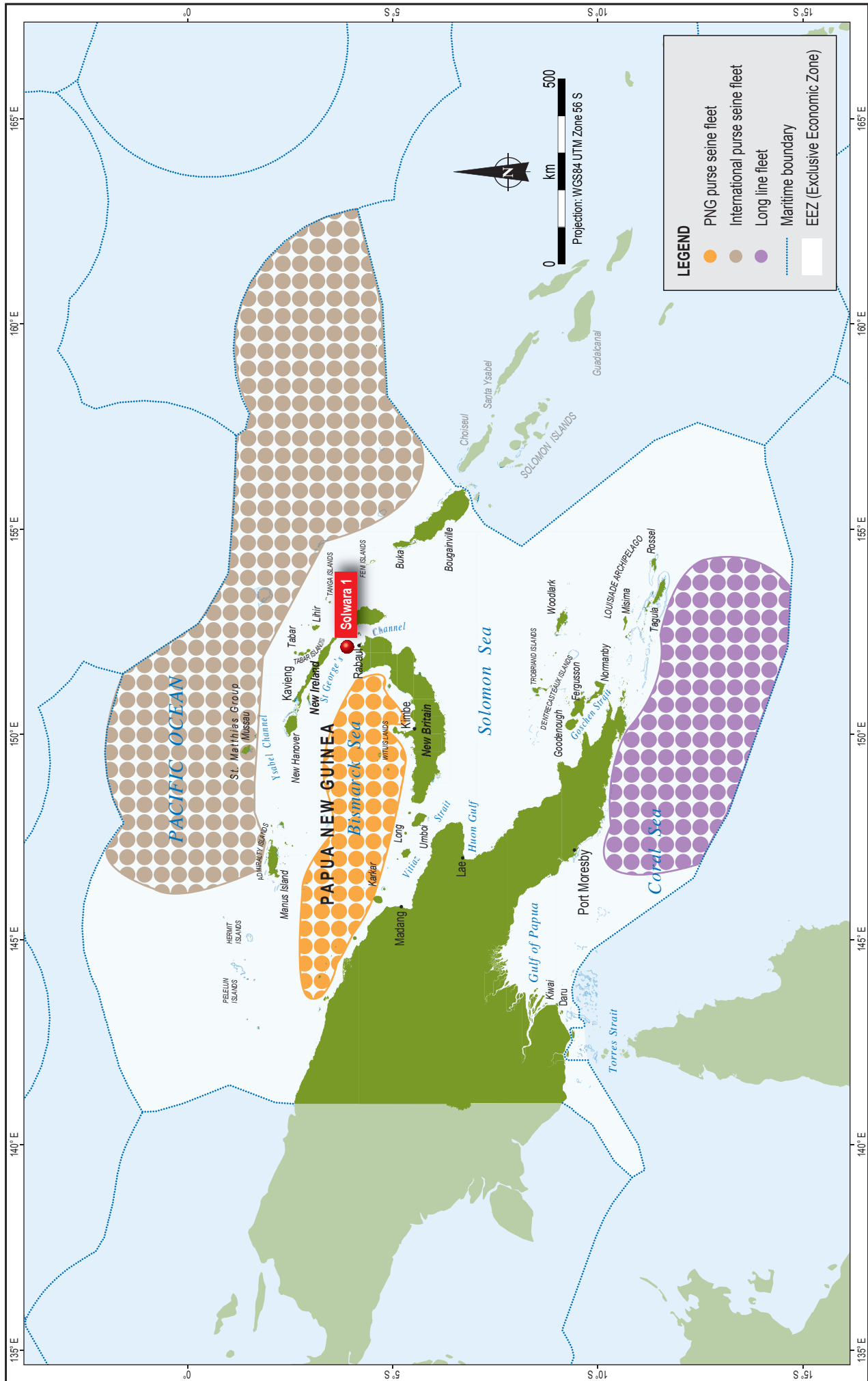
Plates

- 5.1 Tug boat
 - 5.2 Shuttle barge
 - 5.3 Mobile stacker
 - 5.4 Stockpile storage area
 - 5.5 Mobile ship loader
-
- 7.1 Eruption of Tauruvur Volcano, Rabaul, 25 February 2008
 - 7.2 Eruption of Tauruvur Volcano, Rabaul, 12 March 2008. Port of Rabaul is located in the middle foreground
 - 7.3 Formation of chimney lattice in Solwara 1 West Zone:
 - A. Formation of 58 cm of new chimney lattice over 12 months following the removal of the top part of an existing chimney
 - B. Formation of 60 cm of new chimney lattice over two days from the top of a drill hole
 - 7.4 75 kHz ADCP current meter and flotation collar
 - 7.5 300 kHz ADCP current meter deployed by ROV on the Solwara 1 mound
 - 7.6 Skipjack tuna at Solwara 1 at 172 m water depth
 - 7.7 Squid at 16 m water depth
 - 7.8 Venting chimney at Solwara 1
 - 7.9 Outcrop of dacite

- 7.10 Dead snails
 - 7.11 Dead snails
 - 7.12 Actively venting chimney with high biomass
 - 7.13 Actively venting chimney with low biomass
 - 7.14 Chimney actively venting clear hot fluid
 - 7.15 Chimney actively venting plumes of sediment
 - 7.16 Active (venting) sites at both Solwara 1 and South Su were dominated by three habitat zones defined by their biomass-dominant species:
Habitat A closest to the vent: *Alviniconcha* sp. (Hairy Snails), Habitat B middle zone: *Ifremeria nautili* (Black Snails) and Habitat C outer zone: *Eochionelasmus ohtai* (Barnacles).
 - 7.17 Deep-sea mussel (*Bathymodiulus manusensis*) at South Su
 - 7.18 Vestimentiferan tube worm (*Arcovestia ivanovi*) at South Su
 - 7.19 Bamboo coral (*Keratoisis* sp.)
 - 7.20 Stalked barnacles (*Vulcanolepas parensis*)
 - 7.21 Hydroids
 - 7.22 Carnivorous sponges (*Abyssocladia* sp.)
 - 7.23 Push-core being used from ROV arm
 - 7.24 Sediment samples taken on the abyssal plain 10 km west of Solwara 1 using multicorer
 - 7.25 Ash plume from Tavurvur Volcano over Rabaul, 26 October 2006
 - 7.26 Fishing boats at Port of Rabaul
 - 7.27 Passenger boats at Port of Rabaul
 - 7.28 Container ship at Berth 2 - Port of Rabaul
 - 7.29 Berth 2 and Shed 10
 - 7.30 Berth 1 and Shed 1
-
- 9.1 Probability of return water plume exceeding ANZECC/ARMCANZ (2000) suspended solids target at Solwara 1
 - 9.2 Depositional footprint from unconsolidated sediment disposal and competent waste material side casting, post mining at Solwara 1
 - 9.3 Sources of potential impact from offshore mining operations
-
- 11.1 Ash accumulation on the road in front of Rabaul Hotel, 29 December 2006
 - 11.2 Overnight ash accumulation on a vehicle at Rabaul Hotel, 27 October 2006

Chapter 8

Figures



Note: Fishing effort extent approximate only.
 Source: Papua New Guinea Annual Fishing Report, Tuna Fisheries Report - Papa New Guinea, August 2006.

coffey natural systems

Job No: 7008
 File Name: 7008_09_F08.01_HB

Nautilus Minerals Niugini

Solwara 1 Project

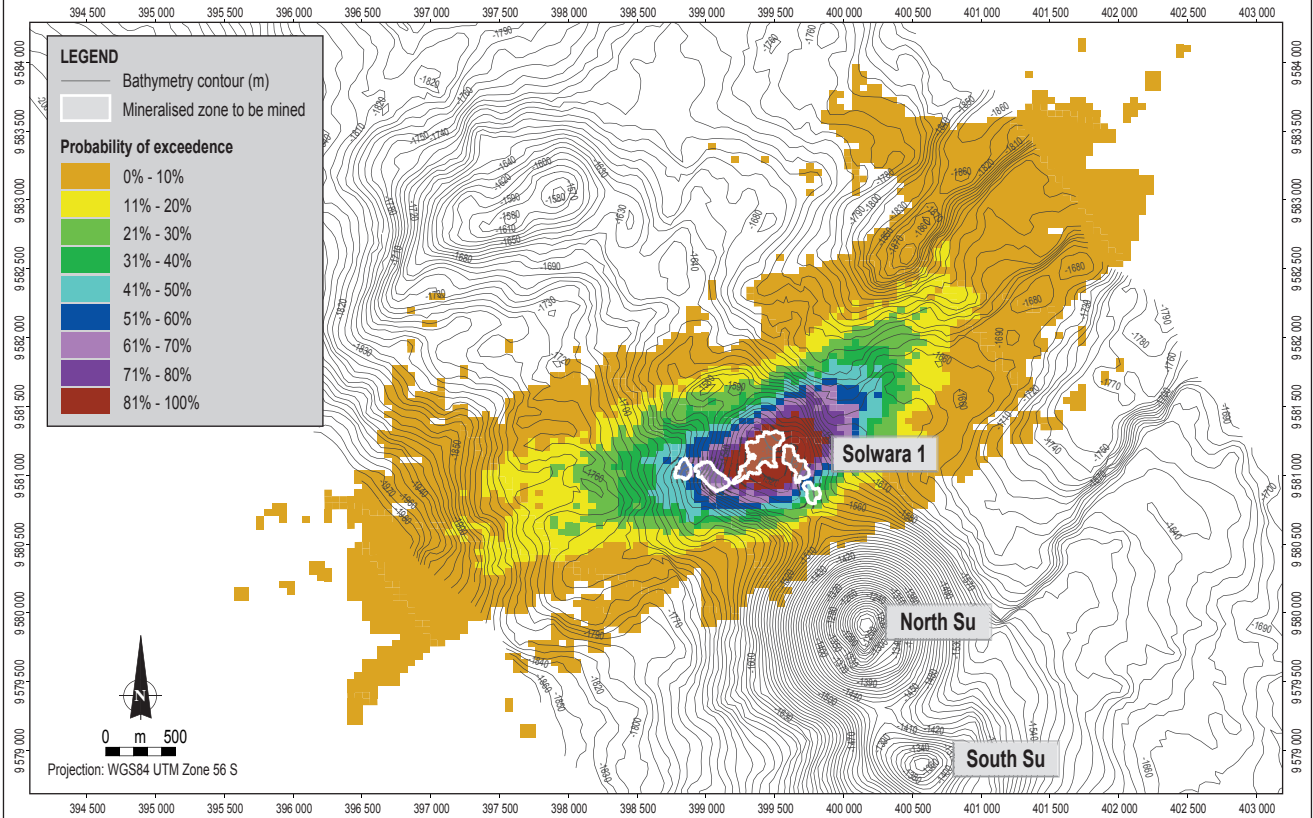
Tuna fishing efforts within the PNG Exclusive Economic Zone

Figure No: 8.1

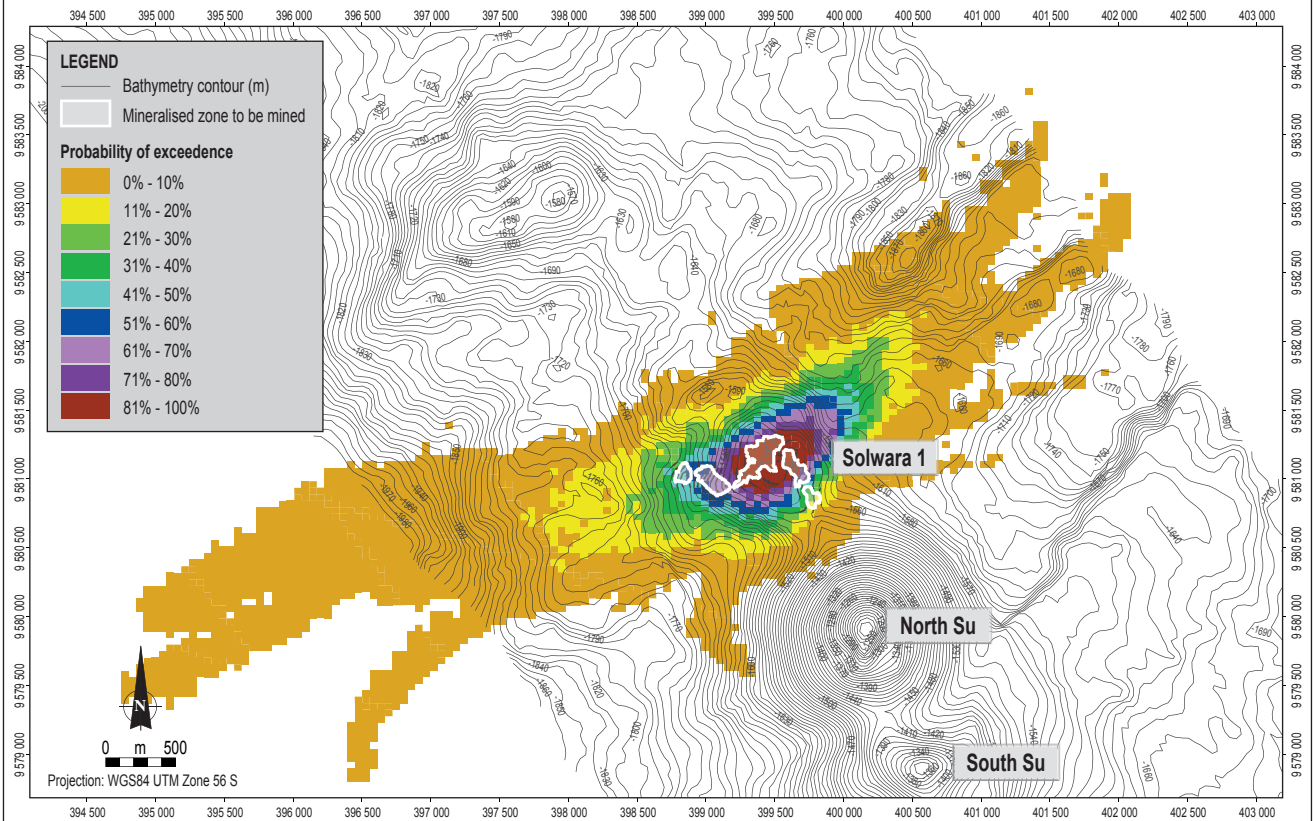
Chapter 9

Figures

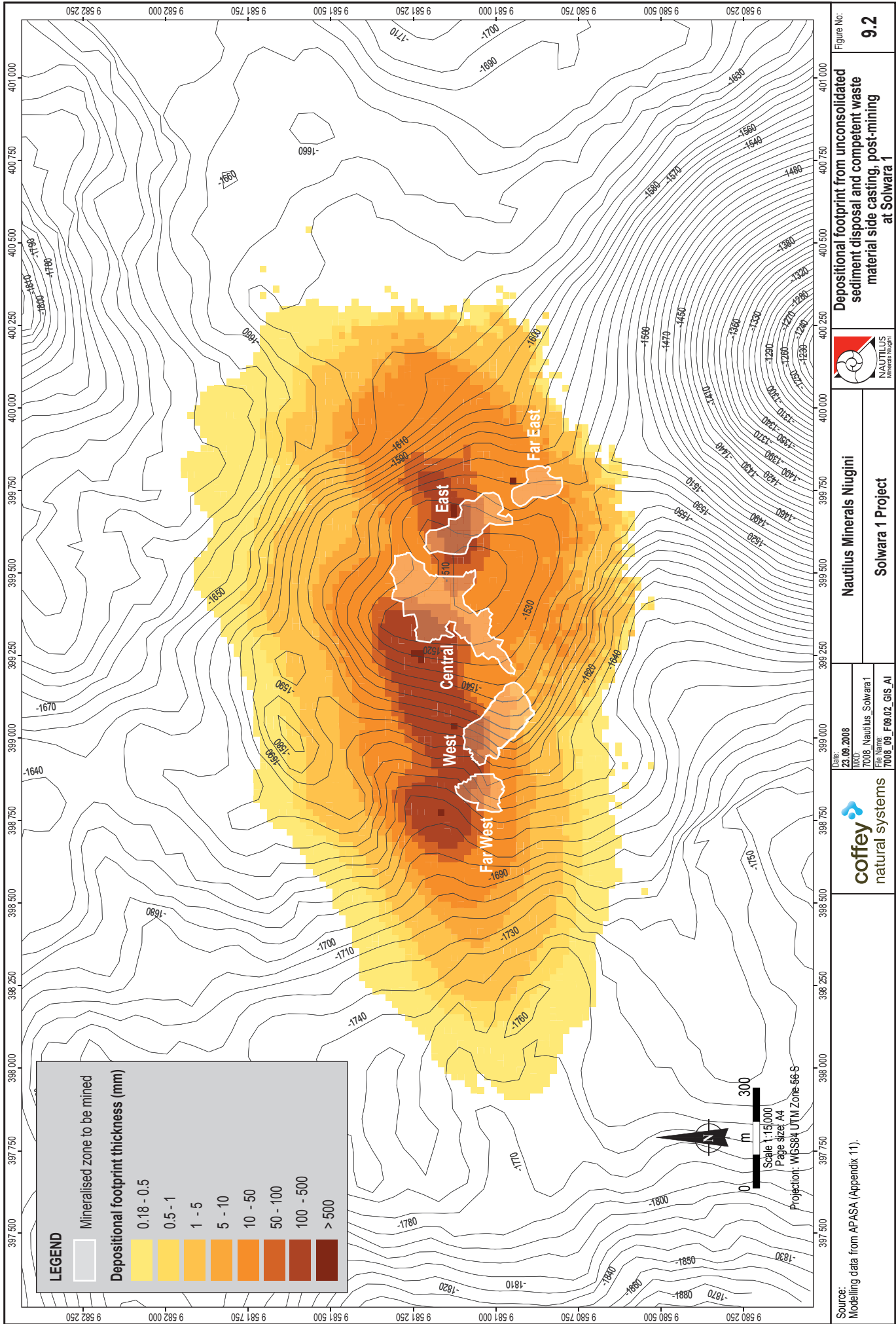
Return water plume discharged at 5.8 °C



Return water plume discharged at 11.4 °C



Source: Modelling data from APASA (Appendix 11).



Source: Modelling data from APASA (Appendix 11).

coffey
natural systems

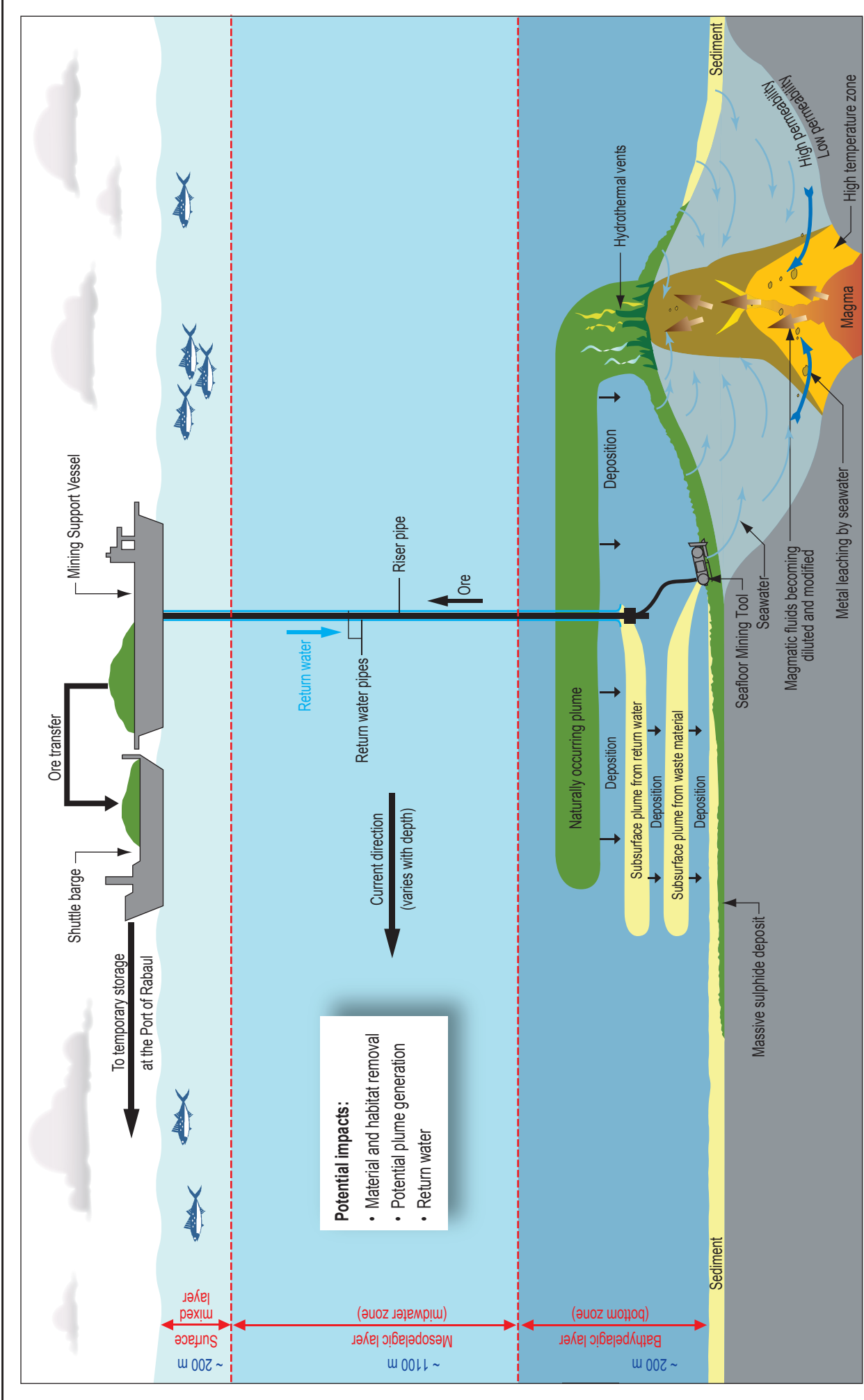
Date: 23.09.2008
 Drawn: 7008_Nautilus_Solwara 1
 File name: 7008_09_F09.02_GIS-A1

Nautilus Minerals Niugini
Solwara 1 Project

NAUTILUS
Natural Systems

Depositional footprint from unconsolidated sediment disposal and competent waste material side casting, post-mining at Solwara 1

Figure No: **9.2**



Potential impacts:

- Material and habitat removal
- Potential plume generation
- Return water

Chapter 10

No Figures or Plates for this Chapter

Chapter 11

Plates



Plate 11.1
Ash accumulation on the road
in front of Rabaul Hotel,
29 December 2006



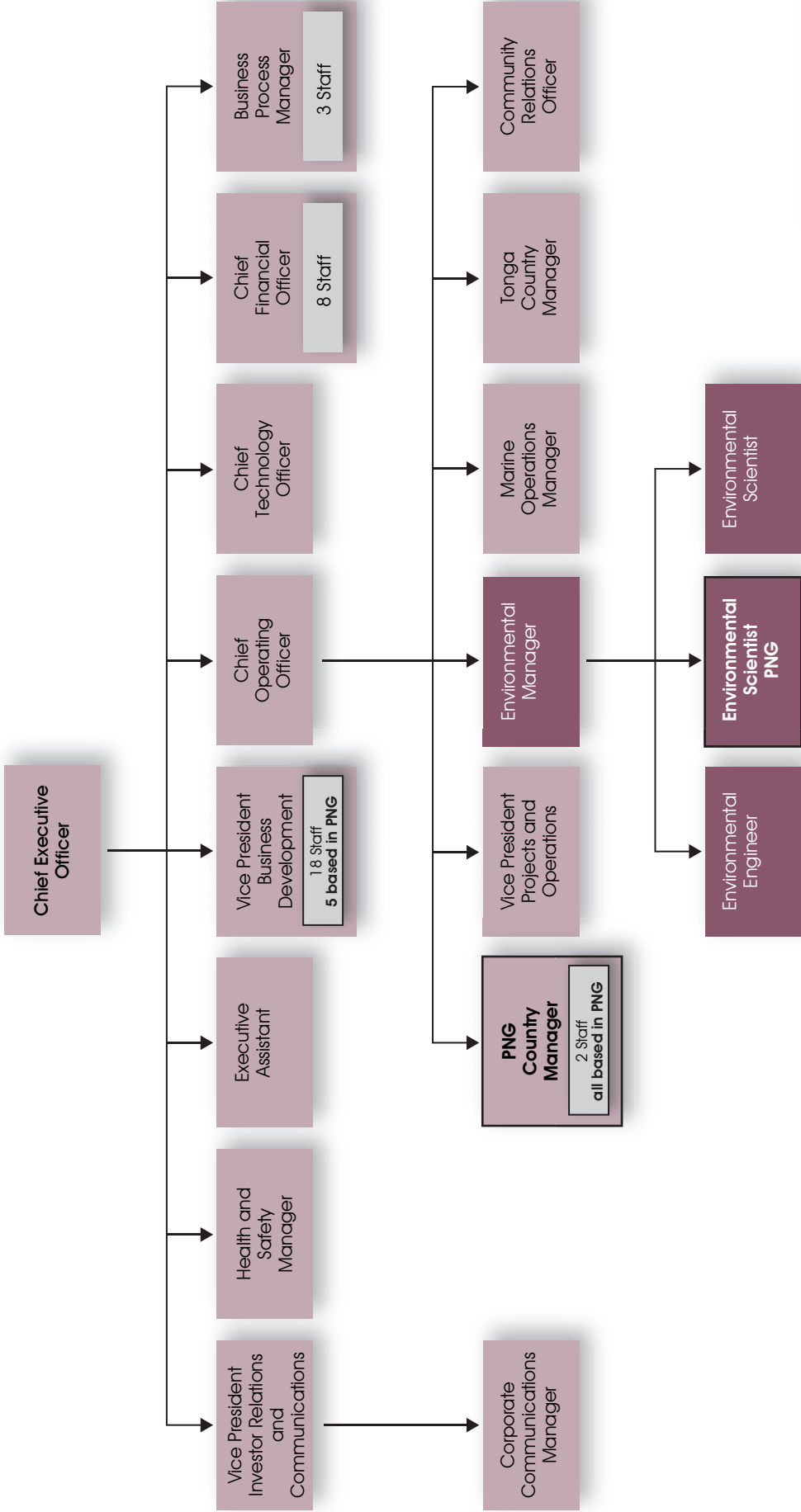
Plate 11.2
Overnight ash accumulation on
a vehicle at Rabaul Hotel,
27 October 2006

Chapter 12

No Figures or Plates for this Chapter

Chapter 13

Figures



KEY
 PNG - Papua New Guinea
 Position based in PNG

Chapter 14

No Figures or Plates for this Chapter

Chapter 15

No Figures or Plates for this Chapter

Chapter 16

No Figures or Plates for this Chapter



Cyclus is an EMAS certified stock
produced by Dalum Papir A/S, Denmark
Mill registration number DK-000023.

This material is printed on CPI Paper's (CyclusPrint matt/ Cyclus Offset), a 100% post-consumer recycled paper from Dalum Paper an EMAS accredited mill.
EMAS is the European Union's regulated environmental management scheme.